

Luminaire Technical Information - Datasheet

The EFICAZ LED Street luminaire with its high performance & state of the art design guarantees professional lighting for urban and suburban contexts.

This product features advance cut-off IP-67 optical system that eliminates skyward light dispersion entirely and designed to save maximum energy while achieving high photometric performance. This allows the application in street lighting schemes where there is a significant distance between the poles.



Exclusive Features:

- Aesthetic contours
- Luminaire System Efficacy > 100 lm/W
- Tilttable LED Angle
- Modular UV protected optics increases luminaire efficiency by 20%
- Increased uniformity ratio by 25%
- Excellent Thermal Management
- Over Voltage Auto-Restart Protection

Even, non-dazzle lighting, no skyward dispersion and complete compliance with light pollution standards make EFICAZ LED an ideal street and residential lighting system. It decorates the urban landscape with its distinctive design and hi-tech style, as well as renewing a sense of communication and freedom by efficiently lighting streets, car parks, and green areas

EFICAZ LED Street Luminaires can yield up to 85-percent reduction in system energy compared with standard HID systems, depending on roadway applications.

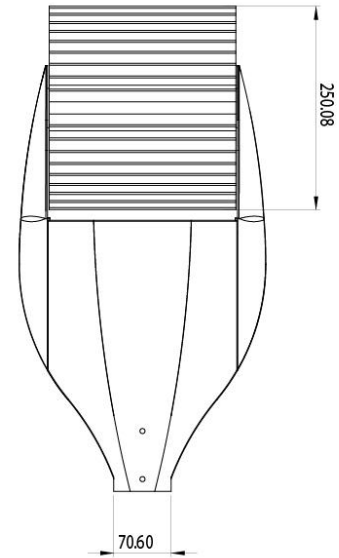
Table of Contents

EFICAZ Exclusive Features	1
A. Technical Information	2
▪ Housing & Mounting	
▪ Electrical Features	3
▪ Optical Features	
B. Ordering Data	3

A. Technical Information

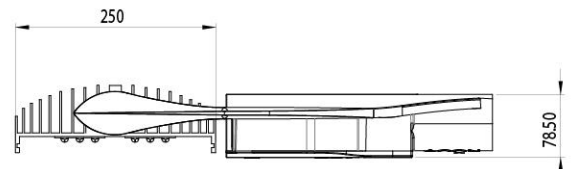
1) Housing and Mounting

Heat Sink Material		Aluminium
LEDs module Tilt	°	Adjustable
Optics I.D.		10322-1-2
Degree of Protection for optical module		IP 65 / 66 / 67
Lens Material		UV stabilized Polycarbonate
Lens Type		Modular
Mounting Height	m	9 -12
Mounting I.D	mm	58
Installation		Side entry
Product Testing		EMC: EN 55015 IEC 61547, IEC 61000-3-2 IEC 61000-3-3, IEC 60598
Other Testing		LM 79, RoHS
Certification		CE



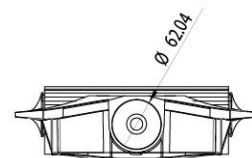
2) Electrical Features

Electronic Driver		ED-50/60/70/E
System Wattage	W	100 / 120 / 130 / 140 / 150
Mains Voltage	V	220-240
Mains Frequency	Hz	50
Power Factor		> 0.95
THD	%	< 10
Over Voltage - Auto Restart Protection	V	270-300
Surge Protection	KV	4
E.D. Testing		IEC 61347-2-13

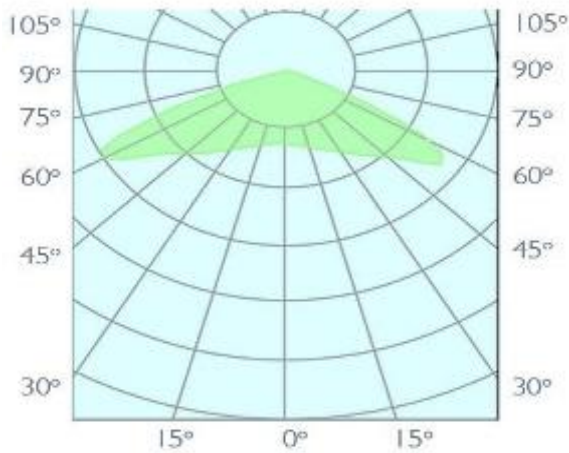


3) Optical Features

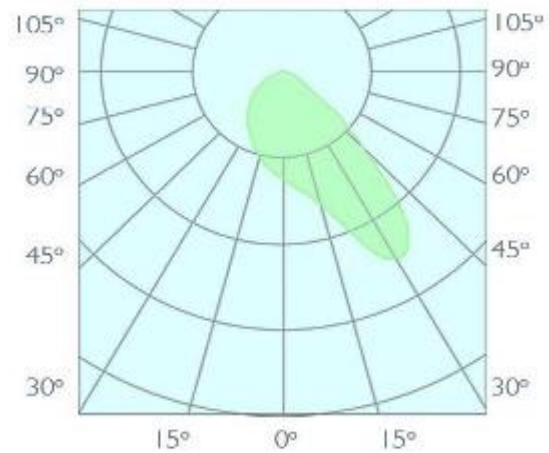
Light Source		High Powered LEDs		
LED Efficiency	lm	>140 / W		
Lifetime of LEDs		100.000 Hours L70 (6k) , Ta=85° C		
Colour Temperature	K	4000	5000	6000
System Efficacy	W	102	102	102



Photometrics



■ C0 - C180



■ C90 - C270

B. Ordering Data

Color	CCT Range (K)		CRI
	Min	Max	
Cool White	5700	6000	70
Cool White	5000	5300	70
Neutral White	4000	4300	75

Lamp	System Wattage	Substitute *	Dimensions (mm)	Weight	Shipping
	W	W	l x b x h	kg.	Units
EFICAZ 100W LED SL	100	250	596 x 304 x 82	5.00	20
EFICAZ 120W LED SL	120	250	596 x 304 x 82	5.00	20
EFICAZ 130W LED SL	130	250	596 x 304 x 82	5.20	20
EFICAZ 140W LED SL	140	250	596 x 304 x 82	5.50	20
EFICAZ 150W LED SL	150	250	596 x 304 x 82	5.50	20

* Substitute depends on road design. For design based lighting solutions, kindly contact Factory.